

## Wireless I/O & Irrigation

- Reliable and robust solution for cable replacement
- Industrial housing and waterproof to IP67 sealing degree
- Integrated Signal strength visualisation
- Secure system with alarm and default output if radio link is lost
- Up to 3 km range (line of sight)
- Direct management in real time of irrigation process:
  - Soil moisture measurement
  - Valve control
  - Tank level monitoring
  - Pump activation and many other applications...
- Substantial savings on water and fertilizer consumption
- Ensure optimum crop growth
- Different power options include: 230 Vac or 24 Vdc, Solar Panel or Long-Life Battery
- Possible to link controllers or PLCs with Data Radio wireless modems
- Compatible with all types of sensors
- Easy to expand and increase range with repeaters



**sensing  
unplugged.**<sup>™</sup>

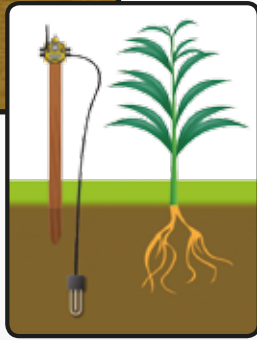
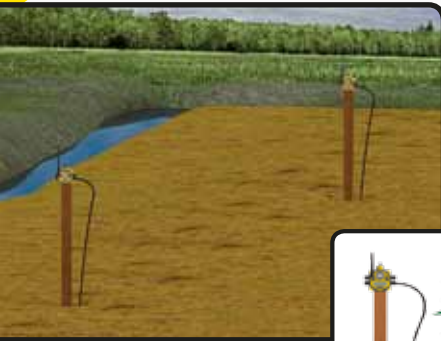
**BANNER**<sup>®</sup>

more sensors, more solutions

Banner Engineering Europe  
Park Lane, Culliganlaan 2F  
1831 Diegem  
Belgium  
+32 2 456 07 80  
[www.bannereurope.com](http://www.bannereurope.com)

# Wireless Solutions for Irrigation

## Soil Moisture



Banner offers a simple wireless solution for humidity, temperature, conductivity and accurate measurement of the soil humidity for irrigation system management. Available factory-configured kits offer more than 1 year battery-life with a 1 minute report rate.

## Valve Control



Based on the weather and the crop needs a Wireless Node can control a specific solenoid valve in real-time. This improves daily constant timing irrigation and helps to avoid manual setup of each valve with a handheld pocket device. A FlexPowered Node with a single integrated battery can be used to solve this application and will provide years of power in the field.

## Tank Level Monitoring



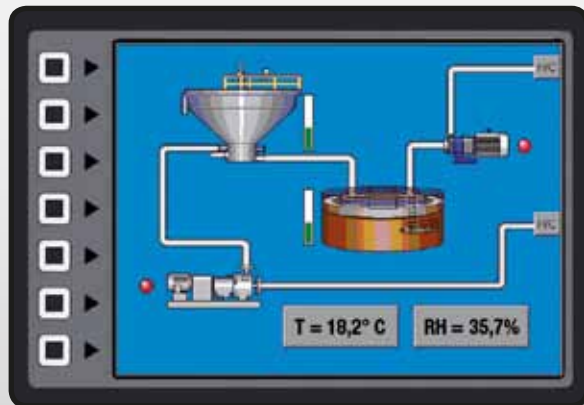
A FlexPower Node used in a conjunction with a power-optimized ultrasonic level sensor will collect and transmit the level of a dry or wet tank for up to 5 years on a single battery.

## Pump Activation



A Banner Wireless Node, is used to activate a pump that could be used for direct irrigation or to fill a tank. If the radio link is lost for any reason, the Node outputs can be configured to stop automatically and send an alarm to key personnel.

## Data Radio, Wireless Modem



Data Radios provide a wireless link for RS232 and RS485. Connect controllers, PLCs or any Modbus enabled device without running cables for power or signal. The Banner Data Radio can be powered by 10-30 Vdc or Solar panels.



### SENSORS



### VISION



### WIRELESS I/O



### INDICATORS



### SAFETY



Banner offers a full range of sensing solutions

BANNER ENGINEERING EUROPE  
[WWW.BANNEREUROPE.COM](http://WWW.BANNEREUROPE.COM)

